



VALUE BUILT WITH QUALITY



Pre Engineered Steel Building



About Us

As India's leading steel and Engineering Company, Nezone Group business operations extend to the production of the full range of steel products and services.

The Nezone Group is a multi-plant manufacturer, specializing in the production of top quality electric-welded steel tubes. Starting with Electric Resistance Welded (ERW) steel tubes both Black & Galvanized of different dimensions, the group has carefully extended its capabilities to manufacture other steel products as well.

Nezone is strategically located throughout the country, Meghalaya, Assam, West Bengal, Odisha, Tamil Nadu

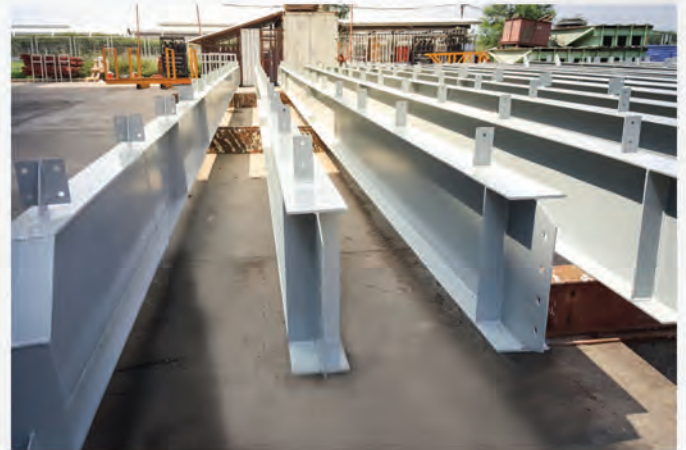
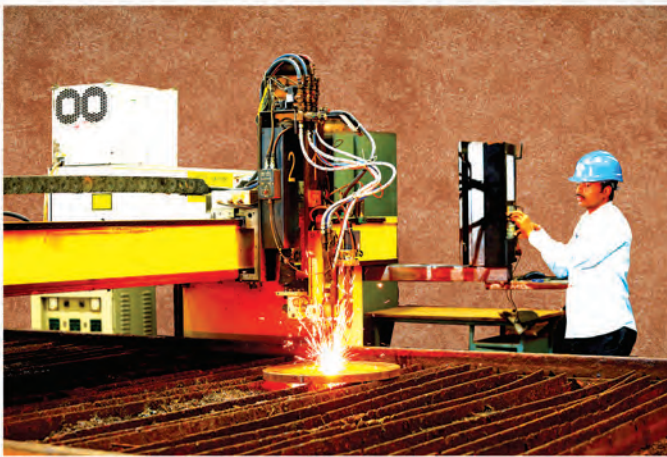
The plant locations have been determined in accordance with the best route to reach global and pan-Indian markets.

Nezone holds a number of accreditations from prestigious accredited agencies





Plant at a Glance



Applications of PEB



Logistic Park



Factory Building



Warehouse Building



Industrial Shed



Workshop Building



Airport Building



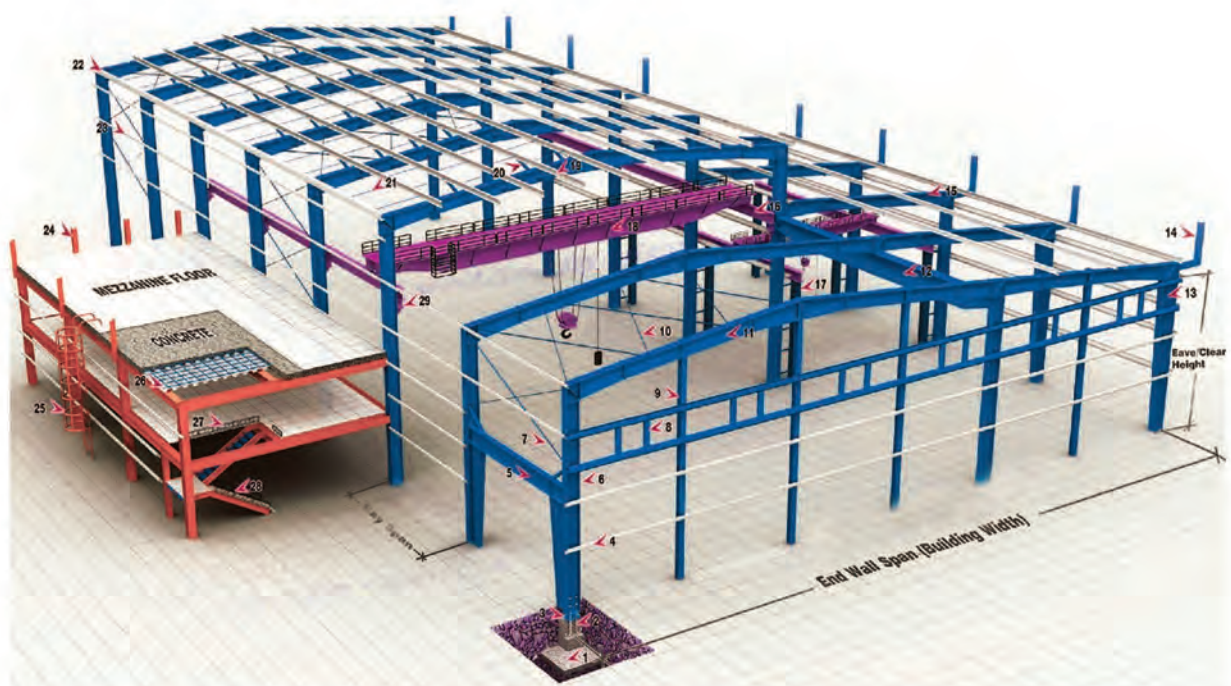
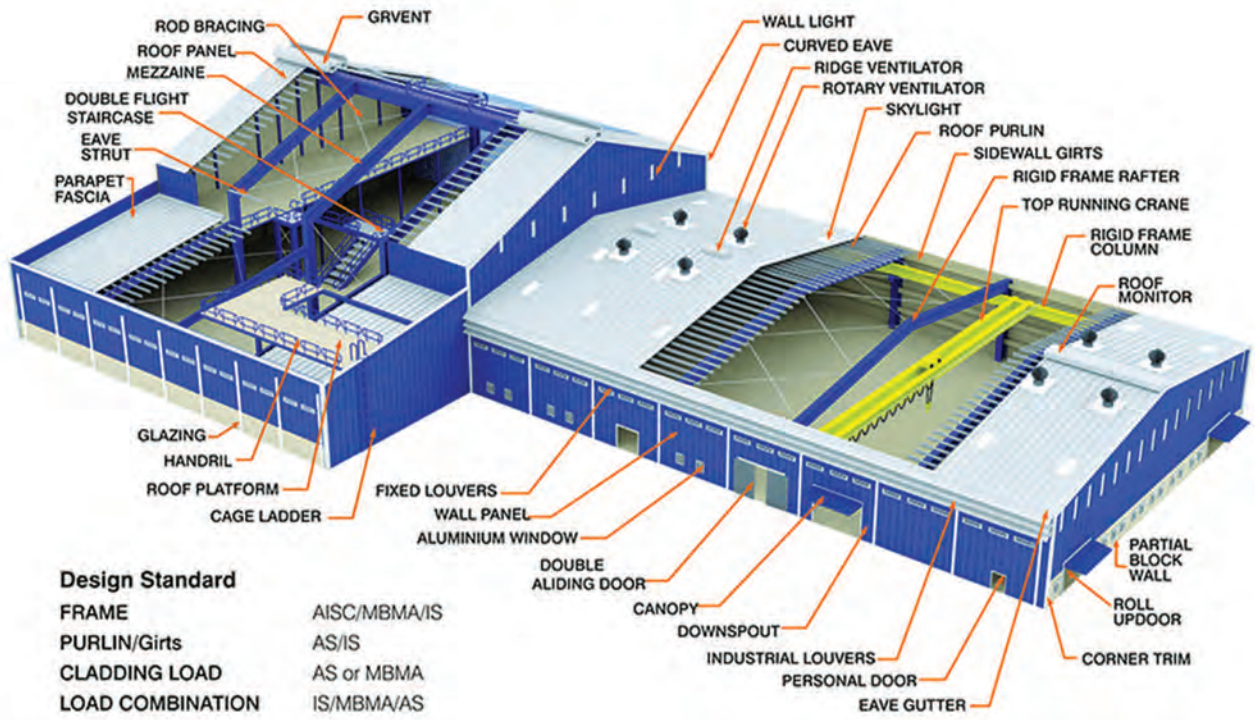
Parking Shed



Metro Stations



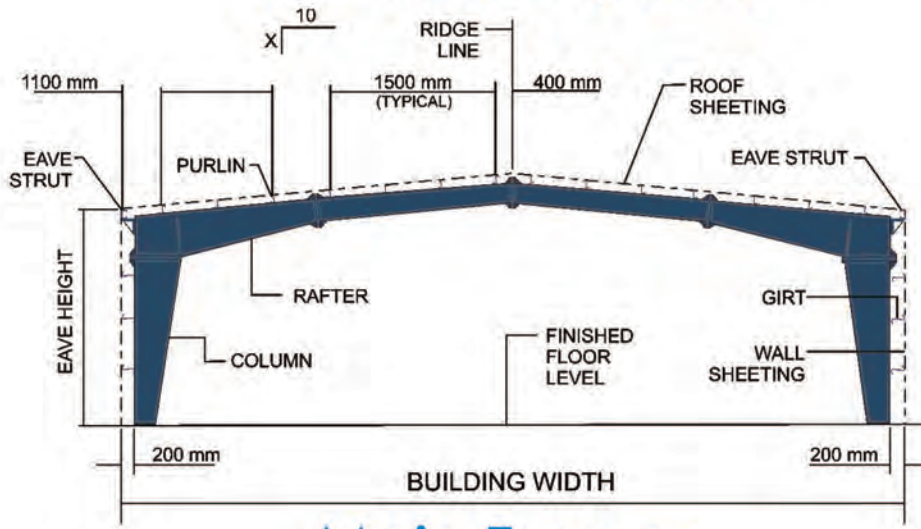
Building Components



- | | | | |
|-------------------------------------|--------------------------------------|--------------------|---------------------------------|
| 1 - Concrete Footing | 8 - Framed Opening (Window/Louwer) | 15 - Lean To Frame | 22 - Eave Strut |
| 2 - Anchor Bolts | 9 - End Wall Wind Column | 16 - Crane Beam | 23 - Side wall Girt |
| 3 - Base Plate | 10 - Roof Bracing (Angle/Pod/Cables) | 17 - Crane Column | 24 - Flush Fascia Frame |
| 4 - End Wall Girt | 11 - Main Frame Rafter | 18 - EOT Crane | 25 - Cage Ladder |
| 5 - Portal Bracing | 12 - Jack Beam | 19 - Roof Purlin | 26 - Deck Panel with Steel Mesh |
| 6 - Main Frame Straight Column | 13 - Main Frame Tapered Column | 20 - Flange Brace | 27 - I-land Pail (Steel) |
| 7 - Wall Bracing (Angle/Pod/Cables) | 14 - Cantilevered Fascia Frame | 21 - Sag Rod | 28 - Staircase (Checker plate) |
| | | | 29 - Crane Bracket |



Structural System



Main Frames



3m 18m

Lean To (L-TO)



6m 18m

Space Saver (SV)



3m 6m

L Canopy (L-CAN)



6m 18m

Single Slope



6m 12m

Butterfly Canopy (T-CAN)



24m 48m

BEAM & COLUMN(BC-1)



36m 72m

BEAM & COLUMN(BC-2)



48m 96m

BEAM & COLUMN (BC-3)

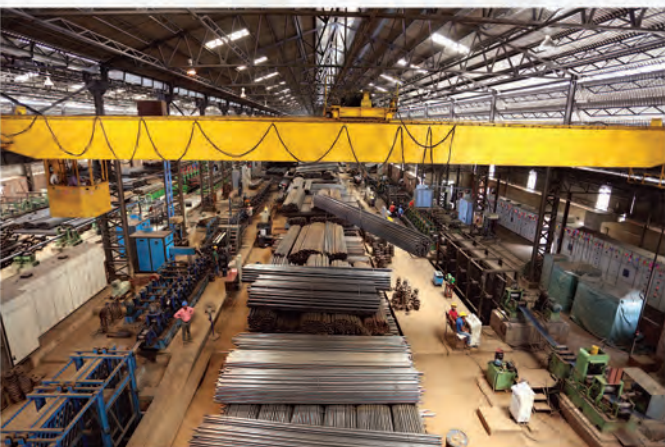


36m 72m

BEAM & COLUMN(BC-2)



Our Pan - India plants





Guwahati Office

5th Floor D.D. Tower G. S. Road
Guwahati – 781005
Assam India
Phone: +91 361 2343951/52
Email : netl@nezonesteel.com

Kolkata Office

Nezone House
19 Jatin Das Road
Kolkata – 700029
Phone: +91 33 35115011
Email: nezone@nezonesteel.com

Scan me to Download
Product Brochures

